



Quaife BMW

Tuning BMW

Service BMW

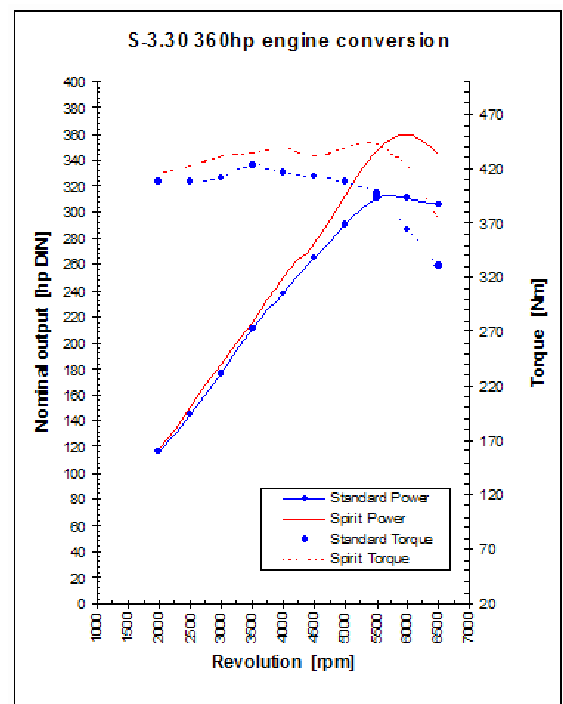
B4-3.5 366hp Complete Conversion



The BMW Z4 sDrive 35i is recognised as a superior sporting roadster. The twin turbo six has huge performance potential, but given that BMW cannot allow this car to steal the thunder of the M3, the engine performance has been capped to a deliberately modest level.

Birds are proud, therefore, to announce the first fully developed engine package for this car. Development of this engine was started before BMW released the car into the public domain, and the all-important engineering and durability testing was completed in record time. Moreover, there is little doubt that whilst BMW have endowed the car with superb dynamics, there remain significant margins where performance can be improved.

We have coordinated all of the necessary equipment and expertise to transform the braking, handling, traction and ride quality, so that the driver is able to fully communicate with the chassis, and truly elevating the dynamics to provide the real ultimate driving experience.



All technical work is undertaken at Birds facility in Iver, near Heathrow, with new engine management maps individually programmed and transmitted from the factory. All conversions are properly guaranteed for both performance and longevity. Only the best will do, and only available from Birds - Ultimate BMW Performance Tuning. Underlining our place at the cutting edge of tuning technology, all complete conversions carry comprehensive warranties of 24 months, without mileage limitation.

Kevin Bird Garages Limited

2, The Ridgeway, Iver, Buckinghamshire, Great Britain, SL0 9JQ
 Tel 01753 657 444, Fax 01753 655 963, Web www.BirdsAuto.com



Quaife BMW

Tuning BMW

Service BMW

The B4-3.5 366hp Complete Conversion consists of the following items. We will be pleased to revise specifications and pricing to your individual requirements.

Engine	B4-3.5 366hp Engine Conversion
Differential	Quaife ATB diff
Suspension	B4 Sport Suspension
Stabilisers	B4 Anti-Roll Stabilisers



Suspension - The B4 Sport suspension features springs and shock absorbers that have been specifically designed and developed for UK roads. Although our suspensions have indeed been tested on the Nurburgring, they are tuned to work properly on everyday roads. No more crashing over bumps, and poor ride control typical of so-called sport suspensions. You will find our suspension to be a revelation, with corner exit speeds and traction massively improved, without compromising comfort. Ride quality and safety is paramount, and for this reason, the adoption of specially tuned gas shock absorbers and bespoke coil springs that have been genuinely tuned by industry professionals to achieve an impressive balance.



Stabilisers - B4 anti-roll stabilisers complement the chassis balance and trim. Fast drivers will immediately note the prevalent under-steer inherent in the standard BMW chassis. As a consequence we provide significantly more rear stiffness than the front, biasing away from under-steer. Again, these stabilisers have been manufactured to our own specifications. These are not off-the-shelf close-enough specification items.



Quaife ATB Differentials - ATB differentials increase the torque presented at the tyre contact patch with the road, which increases the force exerted on the road, which, in turn, increases the rate of acceleration. In low grip situations, the standard "open" diff. allows one wheel to spin, triggering the traction control and limiting the engine power. The Quaife prevents the wheel with the least grip from spinning, traction control is therefore not triggered, and the car accelerates to it's true potential.

Kevin Bird Garages Limited

2, The Ridgeway, Iver, Buckinghamshire, Great Britain, SL0 9JQ
 Tel 01753 657 444, Fax 01753 655 963, Web www.BirdsAuto.com



Options



Hartge 19" Classic 2 Wheels - The set is fully compatible with all of the factory traction, dynamic stability and puncture protection systems, and ride quality has been maintained by careful design and attention to installed weight of the wheel and tyre assembly. Fully compatible with any of the standard equipment, and of course with all Hartge equipment. Hartge wheels sets come with Pirelli or Continental with 245/35 & 275/30 high performance tyres, which eliminate the uncomfortable ride of the standard run-flat units. Hartge wheels sets are verified for the maximum speed of the car.



Brakes - 378 x 36mm curved vane ventilated and grooved discs for the front axle, featuring low weight alloy hubs, with a unique floating rotor system to prevent vibration and fade. Six piston alloy calipers for reduced weight and mighty stopping power. The feel and progression of these brakes allow fierce braking right up to the point of ABS actuation, both in the wet and dry. Fully protected against corrosion, and they work from cold right up to racing temperatures. Rear Brakes to match are also available. The Z4 requires 19" wheels.



Sport Rear Silencers - are not part of the engine conversion, but manufactured in lightweight stainless steel, they improve the aural quality of the exhaust, and whilst they still meet the criteria of the European D4 noise limits, the tonal change improves the sound to a deep rumble.



Body Exterior - Hartge front spoilers are designed to reduce aerodynamic lift at high speeds, whilst improving cooling to both engine and brakes. Crosswind stability is improved, drag reduced, and the aesthetics of the car dramatically changed. A rear boot lid spoiler is available to complete the look, and integrate the standard or Hartge exhaust outlets more completely into the rear of the car body. The front spoiler is not compatible with the M-Sport front bumper.

Kevin Bird Garages Limited

2, The Ridgeway, Iver, Buckinghamshire, Great Britain, SL0 9JQ
Tel 01753 657 444, Fax 01753 655 963, Web www.BirdsAuto.com



The U.K's Premier BMW Tuning Company.



Interior Accessories - Interior detailing, including aluminium alloy pedals, footrests, handbrake levers and gear lever knobs, and bespoke carbon fibre trims complete any conversion to the tastes of the individual.

A note about tyres. All BMW cars except the M-Power cars are equipped with Run-on-flat tyres from the factory. We cannot stress how important it is to rid yourself of these performance sapping devices. In our opinion, the arguments proposed by BMW for these tyres is totally misjudged, and we know of no customer who regrets installing conventional tyres. A second note..... All tyre brands do not perform similarly. Our recommendations are based on UK road conditions, and provide the best in wet weather grip and handling. If you want race style tyres, we can provide them.

As with all Birds Conversions, expert advice comes as standard. We treat all customers as individuals, and recognise that every individual has their own set of desires and criteria. We have more than 25 years experience in the BMW tuning arena, more than any other organisation in the UK, and know how to get the best performance from BMW cars. We are enthusiasts and are happy to discuss in detail every aspect of the performance of your car. Options are many, but please let us guide you toward Ultimate BMW Performance.

Kevin Bird Garages Limited

2, The Ridgeway, Iver, Buckinghamshire, Great Britain, SL0 9JQ
Tel 01753 657 444, Fax 01753 655 963, Web www.BirdsAuto.com
