



Quaife BMW

Tuning BMW

Service BMW

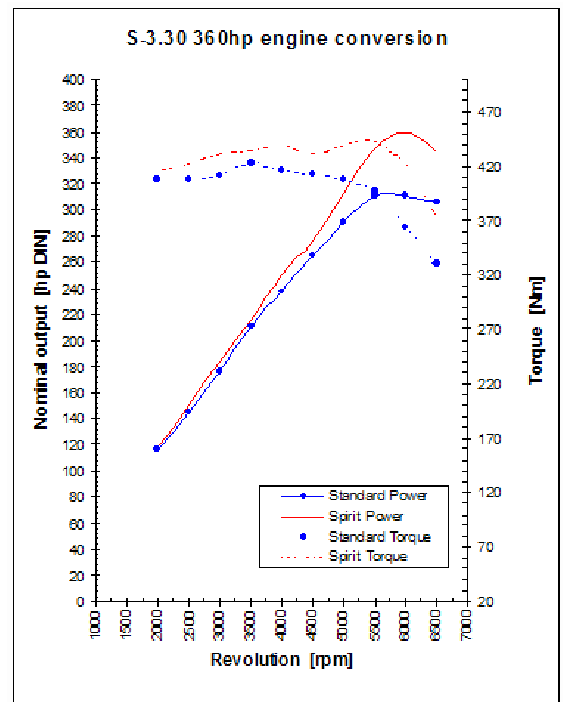
## B4-3.5 366hp Demonstrator



The BMW Z4 sDrive 35i is recognised as a superior sporting roadster. The twin turbo six has huge performance potential, but given that BMW cannot allow this car to steal the thunder of the M3, the engine performance has been capped to a deliberately modest level.

Birds are proud, therefore, to announce the first fully developed engine package for this car. Development of this engine was started before BMW released the car into the public domain, and the all-important engineering and durability testing was completed in record time. Moreover, there is little doubt that whilst BMW have endowed the car with superb dynamics, there remain significant margins where performance can be improved.

We have coordinated all of the necessary equipment and expertise to transform the braking, handling, traction and ride quality, so that the driver is able to fully communicate with the chassis, and truly elevating the dynamics to provide the real ultimate driving experience.



All technical work is undertaken at Birds facility in Iver, near Heathrow, with new engine management individually programmed or transmitted from the factory. All conversions are properly guaranteed for both performance and longevity. Only the best will do, and only available from Birds - Ultimate BMW Performance Tuning. Underlining our place at the cutting edge of tuning technology, all complete conversions carry comprehensive warranties of 24 months, without mileage limitation.

### Kevin Bird Garages Limited

2, The Ridgeway, Iver, Buckinghamshire, Great Britain, SL0 9JQ  
Tel 01753 657 444, Fax 01753 655 963, Web [www.BirdsAuto.com](http://www.BirdsAuto.com)

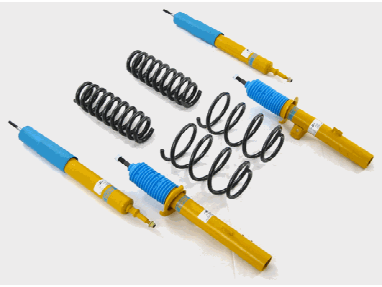



Quaife BMW

Tuning BMW

Service BMW

This B4-3.5 has the 366hp Complete Conversion, which consists of the following items. In addition, the car has options detailed below from our extensive range of developments. Our mission is to remove unwanted characteristics from any BMW car, and improve performance in areas where the driver perceives the standard fare as inadequate. The specification and equipment on this car can be changed to suit the drivers requirements.

Engine	B4-3.5 366hp Engine Conversion
Differential	Quaife ATB diff
Suspension	B4 Sport Suspension
	<p><b>Suspension</b> - The B4 Sport suspension features springs and shock absorbers that have been specifically designed and developed for UK roads. Although our suspensions have indeed been tested on the Nurburgring, they are tuned to work properly on everyday roads. No more crashing over bumps, and poor ride control typical of so-called sport suspensions. You will find our suspension to be a revelation, with corner exit speeds and traction massively improved, without compromising comfort. Ride quality and safety is paramount, and for this reason, the adoption of specially tuned gas shock absorbers and bespoke coil springs that have been genuinely tuned by industry professionals to achieve an impressive balance.</p>
	<p><b>Quaife ATB Differentials</b> - ATB differentials increase the torque presented at the tyre contact patch with the road, which increases the force exerted on the road, which, in turn, increases the rate of acceleration. In low grip situations, the standard "open" diff. allows one wheel to spin, triggering the traction control and limiting the engine power. The Quaife prevents the wheel with the least grip from spinning, traction control is therefore not triggered, and the car accelerates to it's true potential.</p>

**Kevin Bird Garages Limited**

2, The Ridgeway, Iver, Buckinghamshire, Great Britain, SL0 9JQ  
 Tel 01753 657 444, Fax 01753 655 963, Web [www.BirdsAuto.com](http://www.BirdsAuto.com)



## Included Options



**Hartge 19" Ultima Wheels** – Available in Sparkling Silver or Smokey Silver compatible with all of the factory traction, dynamic stability and puncture protection systems, and ride quality has been maintained by careful design and attention to installed weight of the wheel and tyre assembly. Fully compatible with any of the standard equipment, and of course with all Hartge equipment. Hartge wheels sets come with Pirelli or Continental with 245/35 & 275/30 high performance tyres, which eliminate the uncomfortable ride of the standard run-flat units. Hartge wheels sets are verified for the maximum speed of the car.



**Sport Rear Silencers** - are not part of the engine conversion, but manufactured in lightweight stainless steel, they improve the aural quality of the exhaust, and whilst they still meet the criteria of the European D4 noise limits, the tonal change improves the sound to a deep rumble.



**Body Exterior** - Hartge front spoilers are designed to reduce aerodynamic lift at high speeds, whilst improving cooling to both engine and brakes. Crosswind stability is improved, drag reduced, and the aesthetics of the car dramatically changed. A rear boot lid spoiler is available to complete the look, and integrate the standard or Hartge exhaust outlets more completely into the rear of the car body. The front spoiler is not compatible with the M-Sport front bumper.



**Interior Accessories** - Interior detailing, including aluminium alloy pedals, footrests, handbrake levers and gear lever completes any conversion to the tastes of the individual.

As with all Birds Conversions, expert advice comes as standard. We treat all customers as individuals, and recognise that every individual has their own set of desires and criteria. We have more than 25 years experience in the BMW tuning arena, more than any other organisation in the UK, and know how to get the best performance from BMW cars. We are enthusiasts and are happy to discuss in detail every aspect of the performance of your car. Options are many, but please let us guide you toward Ultimate BMW Performance.

### Kevin Bird Garages Limited

2, The Ridgeway, Iver, Buckinghamshire, Great Britain, SL0 9JQ  
Tel 01753 657 444, Fax 01753 655 963, Web [www.BirdsAuto.com](http://www.BirdsAuto.com)



## Options

### Vehicle information

Type	Value
VIN	WBALM72090E164354
Type code	LM72
Type	Z4 35i (EUR)
E series	E89 ( )
Series	Z
Type	ROADST
Steering	RL
Doors	2
Engine	N54
Displacement	3.00
Power	225
Drive	HECK
Transmission	MECH
Colour	BLACK SAPPHIRE METALLIC (475)
Upholstery	LEDER KANSAS/D1 KORALLROT (LYD1)
Prod.date	2009-07-22

### Options

Code	Description (interface)	Description (EPC)
S1CAA	SELEKTION COP RELEVANTER FAHRZEUGE	Selection of COP relevant vehicles
S1CBA	CO2 UMFANG	CO2 package
S1CDA	BRAKE ENERGY REGENERATION	Brake Energy Regeneration
S216A	SERVOTRONIC	HYDRO STEERING-SERVOTRONIC
S230A	EU SPEZIFISCHE ZUSATZUMFAENGE	Extra package, EU-specific
S249A	MULTIFUNKTION FUER LENKRAD	Multifunction f steering wheel
S2KWA	LM RAEDER V-SPEICHE 296/MB	BMW LA wheel, V-spoke 296
S2PAA	RADSCHRAUBENSICHERUNG	Lug bolt retainer
S2TCA	SPORTGETRIEBE MIT DOPPELKUPPLUNG	Sport transmission w/ dual-plate clutch
S2XAA	SPORT-LEDERLENK. MIT SCHALTWIPPEN	Sport steering wheel with shift paddles
S302A	ALARMANLAGE	Alarm system
S423A	FUSSMATTEN IN VELOURS	Floor mats, velours
S428A	WARNDREIECK	Warning triangle and first aid kit
S430A	INNEN-/AUSSENSPIEGEL AUT.ABBLENDEND	Interior/outside mirror with auto dip
S431A	INNENSPIEGEL,AUTOMATISCH ABBLENDEND	Interior mirror with automatic-dip
S441A	RAUCHERPAKET	Smoker package
S459A	SITZVERSTELLUNG, ELEKTR.MIT MEMORY	Seat adjuster, electric, with memory
S470A	KINDERSITZBEFESTIGUNG ISOFIX	Isofix-System
S481A	SPORTSITZE FUER FAHRER/BEIFAHRER	Sports seat
S494A	SITZHEIZUNG FUER FAHRER/BEIFAHRER	Seat heating driver/passenger
S502A	SCHLEIFENWASCHER-WASCHANLAGE	Headlight cleaning system
S521A	REGENSENSOR	Rain sensor
S534A	KLIMAAUTOMATIK	Automatic air conditioning
S563A	LICHTPAKET	Light package
S663A	RADIO BMW PROFESSIONAL	Radio BMW Professional
S676A	HIFI LAUTSPRECHERSYSTEM	HiFi speaker system
S694A	CD-WECHSLER VORBEREITUNG	Provisions for BMW 6 CD changer
S698A	AREA-CODE 2	Area-Code 2 for DVD
S6FLA	USB-AUDIO-SCHNITTSTELLE	USB/Audio interface
L812A	ENGLAND/IRLAND AUSFUEHRUNG	National version England / Ireland
S850A	ZUSAETZL. TANKFUELLUNG EXPORT	Dummy-SALAPA
S863A	SERVICE KONTAKT-FLYER EUROPA	Retailer Directory Europe
S877A	UEBERKREUZBEDIENUNG ENTFALL	Delete cross-pattern operation
S880A	ENGLISCH / BORDLITERATUR	On-board vehicle literature English
S8S2A	KODIERUNG ALARMSIGNAL	Coding alarm signal
S8S3A	AUTOM. VERRIEGELUNG BEIM ANFAHREN	Automatic locking when driving off
S8SCA	LAENDERSPEZ. TELESERVICEFREISCH.	Telematics access request,country-spec.
S8SMA	FAHRGESTELLNUMMER,V.AUSSEN SICHTBAR	Car ident. number visible from outside
S8SPA	COP STEUERUNG	Control unit COP

### Standard equipment

Code	Description (interface)	Description (EPC)
S4ADA	INTERIEURL. ALU. LAENGSSCHLIFF FEIN	Interior trim strips, alu, brushed, fine
S853A	SPRACHVERSION ENGLISCH	Language version English

## Kevin Bird Garages Limited

2, The Ridgeway, Iver, Buckinghamshire, Great Britain, SL0 9JQ  
Tel 01753 657 444, Fax 01753 655 963, Web [www.BirdsAuto.com](http://www.BirdsAuto.com)